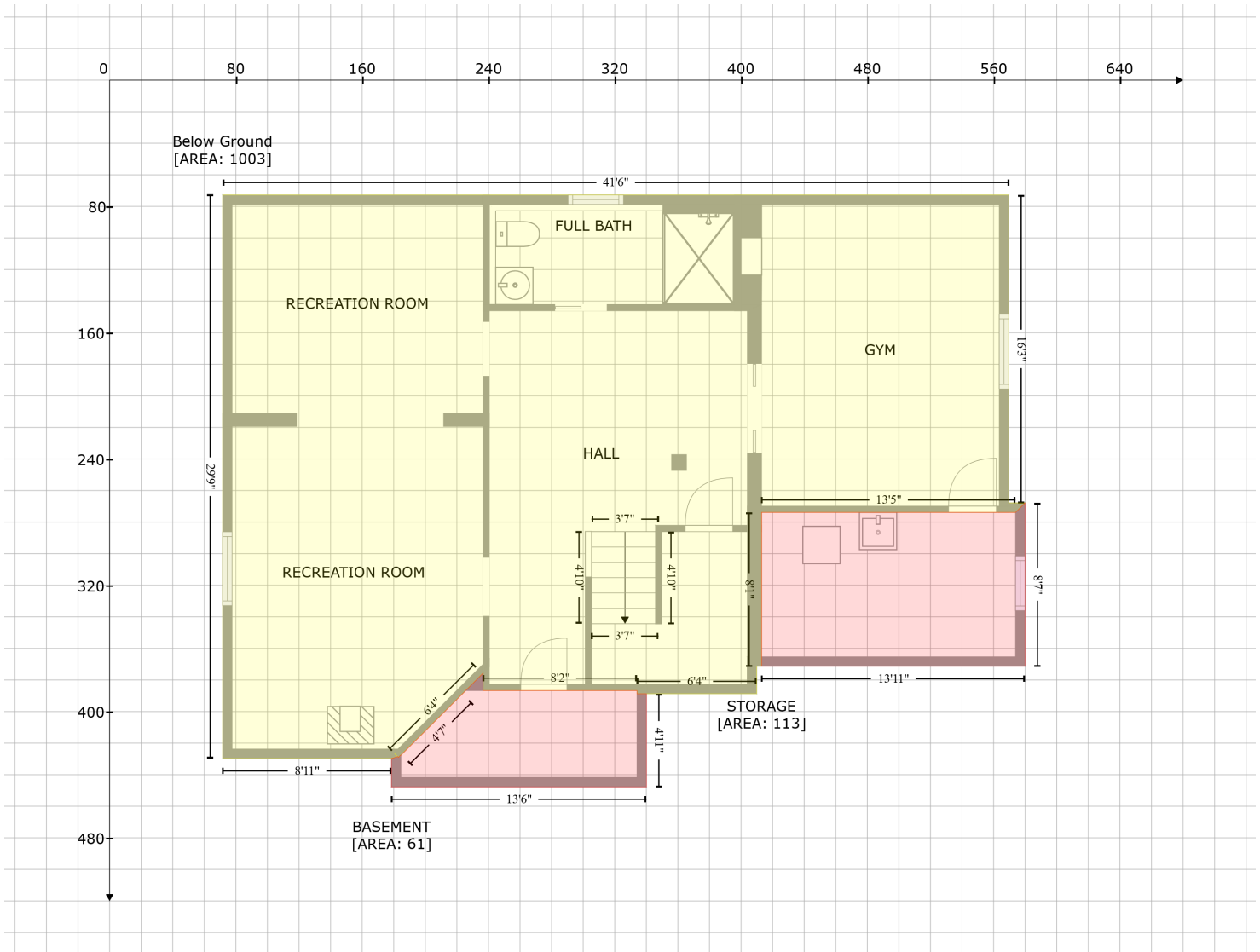


# 7 Carmichael Crescent, Collingwood, Simcoe County, Ontario, Canada, L9Y 4R6

Gross Living Area: 2450 sq. ft



Space	Area (sq. ft)	Calculation <small>Coordinate Polygon Area Algorithm using inches</small>
Below Ground (Living area)	1003	$-\left((569.6 + 569.6) * (72.7 - 267.9) + (569.6 + 579.9) * (267.9 - 267.9) + (579.9 + 573.9) * (267.9 - 273.9) + (573.9 + 413) * (273.9 - 273.9) + (413 + 413) * (273.9 - 371.3) + (413 + 409.9) * (371.3 - 371.3) + (409.9 + 409.9) * (371.3 - 388.7) + (409.9 + 334.1) * (388.7 - 388.7) + (334.1 + 334.1) * (388.7 - 386.7) + (334.1 + 236.6) * (386.7 - 386.7) + (236.6 + 236.6) * (386.7 - 375.7) + (236.6 + 183) * (375.7 - 429.1) + (183 + 180.2) * (429.1 - 426.2) + (180.2 + 180.6) * (426.2 - 426.5) + (180.6 + 181) * (426.5 - 427.3) + (181 + 182.6) * (427.3 - 428.5) + (182.6 + 178.6) * (428.5 - 429.7) + (178.6 + 71.6) * (429.7 - 429.7) + (71.6 + 71.6) * (429.7 - 72.7) + (71.6 + 569.6) * (72.7 - 72.7)\right) * 0.5 * 0.00694$
BASEMENT (Non-living area)	61	$-\left((236.6 + 236.6) * (375.7 - 386.7) + (236.6 + 334.1) * (386.7 - 386.7) + (334.1 + 334.1) * (386.7 - 388.7) + (334.1 + 340.1) * (388.7 - 388.7) + (340.1 + 340.1) * (388.7 - 447.7) + (340.1 + 178.6) * (447.7 - 447.7) + (178.6 + 178.6) * (447.7 - 429.7) + (178.6 + 182.6) * (429.7 - 428.5) + (182.6 + 183) * (428.5 - 429.1) + (183 + 184.2) * (429.1 - 427.7) + (184.2 + 184.6) * (427.7 - 427.7) + (184.6 + 223.6) * (427.7 - 388.7) + (223.6 + 225.5) * (388.7 - 386.7) + (225.5 + 236.6) * (386.7 - 375.7)\right) * 0.5 * 0.00694$
STORAGE	113	$-\left((579.9 + 579.9) * (267.9 - 371.3) + (579.9 + 413) * (371.3 - 371.3) + (413 + 413) * (371.3 - 371.3) - \right)$

# 7 Carmichael Crescent, Collingwood, Simcoe County, Ontario, Canada, L9Y 4R6

Gross Living Area: 2450 sq. ft

Space	Area (sq. ft)	Calculation <small>Coordinate Polygon Area Algorithm using inches</small>
(Non-living area)		$273.9 + (413 + 573.9) * (273.9 - 273.9) + (573.9 + 579.9) * (273.9 - 267.9) * 0.5 * 0.00694$

# 7 Carmichael Crescent, Collingwood, Simcoe County, Ontario, Canada, L9Y 4R6

Gross Living Area: 2450 sq. ft



Space	Area (sq. ft)	Calculation <small>Coordinate Polygon Area Algorithm using inches</small>
FLOOR 2 (Living area)	1144	$-((176.7 + 200.4) * (65.7 - 77.7) + (200.4 + 565.4) * (77.7 - 77.7) + (565.4 + 565.4) * (77.7 - 393.7) + (565.4 + 227.6) * (393.7 - 393.7) + (227.6 + 178.4) * (393.7 - 443.2) + (178.4 + 68.3) * (443.2 - 443.2) + (68.3 + 68.3) * (443.2 - 77.7) + (68.3 + 98) * (77.7 - 77.7) + (98 + 121.6) * (77.7 - 65.7) + (121.6 + 176.7) * (65.7 - 65.7)) * 0.5 * 0.00694$
GARAGE (Non-living area)	401	$-((584.4 + 584.4) * (387.7 - 622.6) + (584.4 + 332.5) * (622.6 - 622.6) + (332.5 + 332.5) * (622.6 - 393.7) + (332.5 + 565.4) * (393.7 - 393.7) + (565.4 + 565.4) * (393.7 - 387.7) + (565.4 + 584.4) * (387.7 - 622.6)) * 0.5 * 0.00694$

# 7 Carmichael Crescent, Collingwood, Simcoe County, Ontario, Canada, L9Y 4R6

Gross Living Area: 2450 sq. ft

Space	Area (sq. ft)	Calculation <small>Coordinate Polygon Area Algorithm using inches</small>
		$(387.7 - 387.7) * 0.5 * 0.00694$



# 7 Carmichael Crescent, Collingwood, Simcoe County, Ontario, Canada, L9Y 4R6

Gross Living Area: 2450 sq. ft

Space	Area (sq. ft)	Calculation <small>Coordinate Polygon Area Algorithm using inches</small>
(Non-living area)		$393.2 + (312.4 + 243) * (393.2 - 393.2) + (243 + 243) * (393.2 - 248.4) + (243 + 357) * (248.4 - 248.4) * 0.5 * 0.00694$